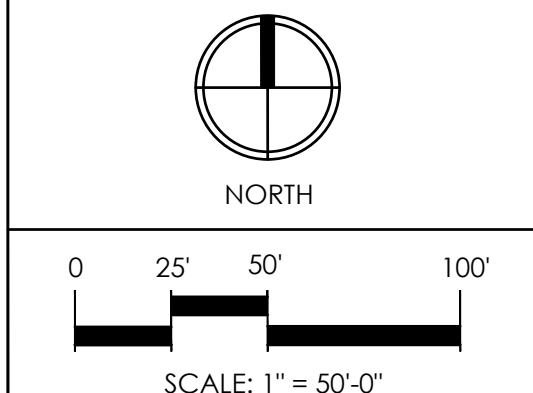


Consultants:

Revisions:

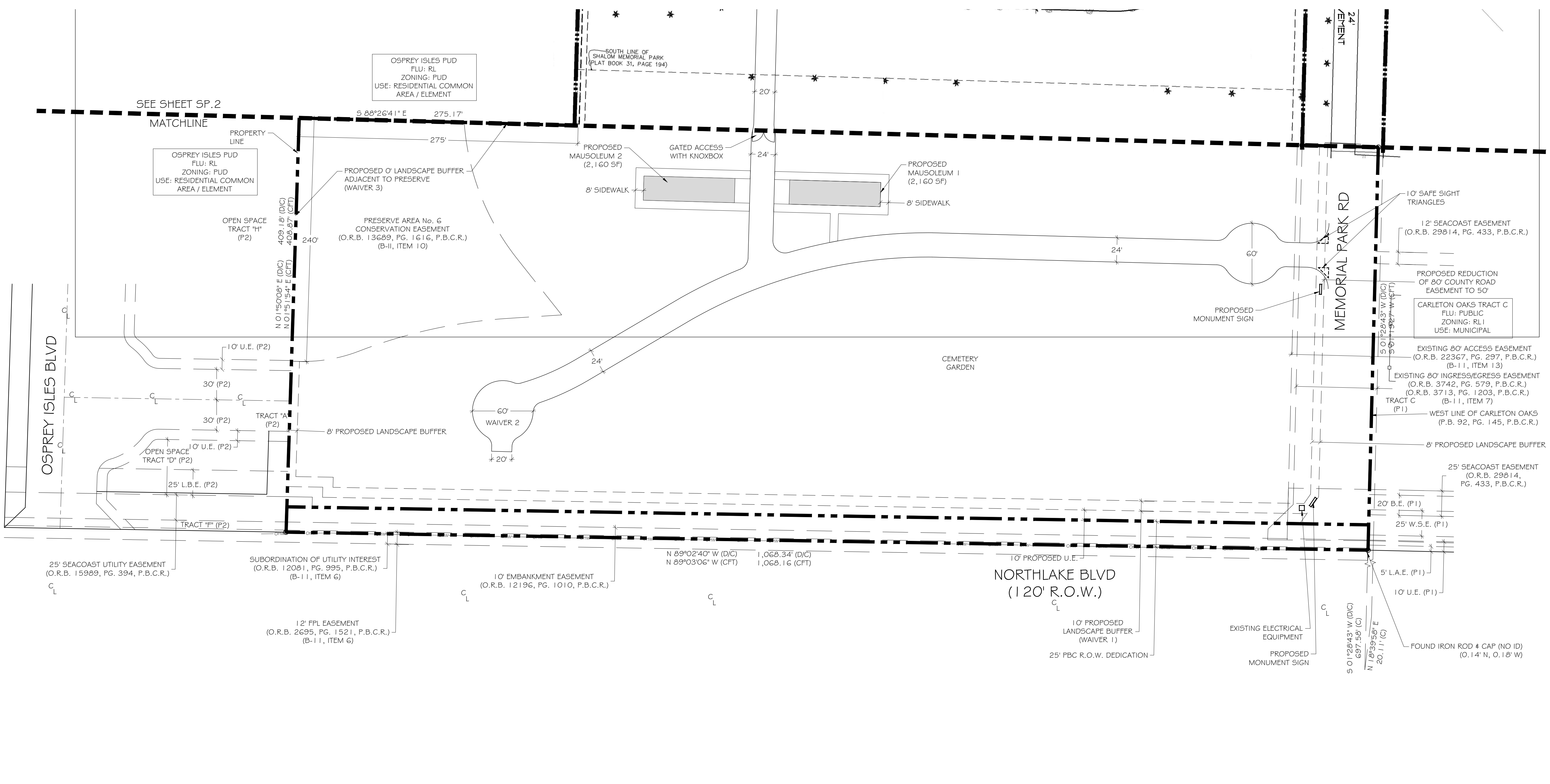
PALM BEACH GARDENS MEMORIAL PARK
 Palm Beach Gardens, Florida
 SCI Funeral Services of Florida, LLC.



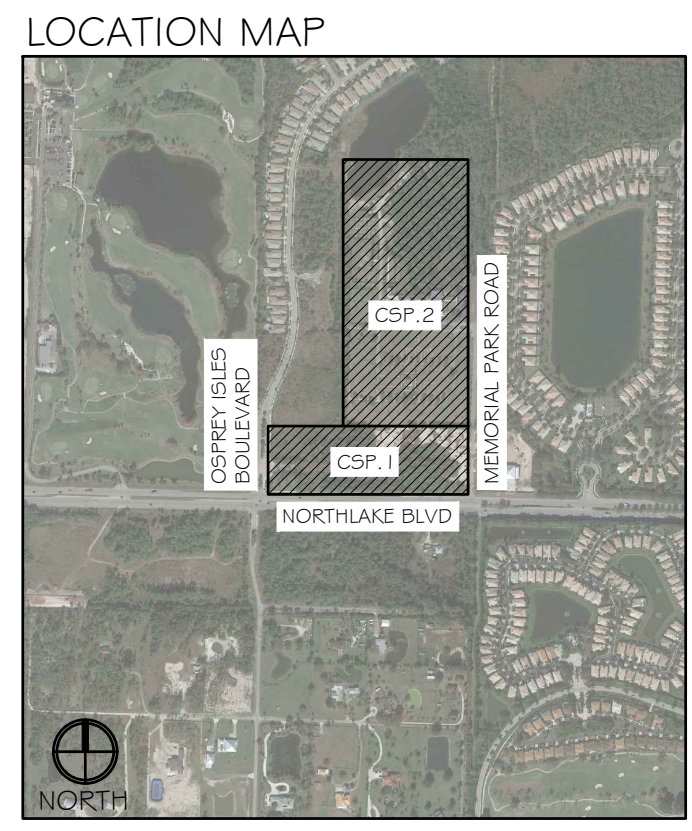
Drawn By: TAC
 Drawing #: 1214
 Date: 09/10/2021

SITE PLAN

SHEET # SP.1



SITE DATA	
APPLICATION NAME	PALM BEACH GARDENS MEMORIAL PARK
ADDRESS (S)	1199 NORTHLAKE BLVD 9321 MEMORIAL PARK RD
PROPERTY CONTROL NUMBER (S)	52-41-42-14-00-000-5030 52-41-42-14-02-000-0000 52-41-42-14-09-012-0000
EXISTING ZONING	PUD WITH UNDERLYING RM / PO / RL-3
PROPOSED ZONING	PUD WITH UNDERLYING RL-3
OVERLAY	PUD
EXISTING LAND USE	VACANT
EXISTING FUTURE LAND USE (FLU)	RM # PO / RL
PROPOSED FUTURE LAND USE	RL
GROSS SITE AREA	43.41 AC (1,890,939.6 SF)
PROPOSED CEMETERY EXPANSION	9.89 AC (430,634.2 SF)
EXISTING CEMETERY	33.52 AC (1,460,131.2 SF)
PROPOSED BUILDING HEIGHT	25' MAX
REQUIRED PARKING*	26 SPACES
1 PER 200 SF OFFICE (3,000 SF)	15 SPACES
1 PER 500 SF MAINT. (2,903 SF)	6 SPACES
5 PUBLIC SPACES	5 SPACES
PROVIDED PARKING	26 SPACES
HANDICAP PARKING	2 SPACES
TAZ	825



PUD OPEN SPACE REQUIREMENTS	
TOTAL REQUIRED OPEN SPACE MINIMUM	5.988 AC (260,837.28 SF) 5% OF GROSS SITE AREA
TOTAL PROPOSED OPEN SPACE	35.45 AC (1,544,319 SF) 88% OF GROSS SITE AREA

WAIVER CHART			
LDR SECTION	REQUIRED	PROPOSED	WAIVER
78-319	20' LANDSCAPE BUFFER ALONG NORTHLAKE BLVD	10' LANDSCAPE BUFFER	10'
78-498	88' DIAMETER FOR CUL-DE-SAC	60' CUL-DE-SAC	28'
78-319	8' LANDSCAPE BUFFER ALONG NORTHWEST CORNER	0'	8'

PUD PROPERTY DEVELOPMENT REGULATIONS						
ZONING	LOT DIMENSIONS		BLDG HT.	MAX LOT COVER	MIN. SETBACKS	
DISTRICT *(RL-3)	SIZE	WIDTH			FRONT	REAR
REQUIRED	6,500 SF	65'	36'	35%	25'	10'
PROPOSED	39.92 AC	1,833.40'	25'	1.6%	145'	46'

DEVELOPMENT TEAM	
APPLICANT	SCI Funeral Services of Florida, LLC. 1929 Allen Pkwy Houston, TX 77019
PLANNER & LANDSCAPE ARCH.	Insite Studio, Inc. 8144 Okeechobee Blvd, Suite A West Palm Beach, FL 33411 561.249.0940
CIVIL ENGINEER / TRAFFIC	Dennis J. Leavy & Associates, Inc. 460 Business Park Way, Suite B Royal Palm Beach, FL 33407 561.753.0650
SURVEY	Dennis J. Leavy & Associates, Inc. 460 Business Park Way, Suite B Royal Palm Beach, FL 33407 561.753.0650
ENVIRONMENTAL	Ecotone Services 13945 89th Street Fellsmere, FL 32948 772.459.3339

LEGEND	
	STOP SIGN
	BENCH
	TRASH CAN
	STOP BAR
	BIKE RACK
	FIRE HYDRANT
	LIGHT POLE

NOTE: *PUD SETBACKS FOLLOW THE UNDERLYING RL-3 ZONING STANDARDS.

NOTE: *PALM BEACH COUNTY PARKING REQUIREMENTS CARRIED FORWARD FROM ORIGINAL APPROVAL.

